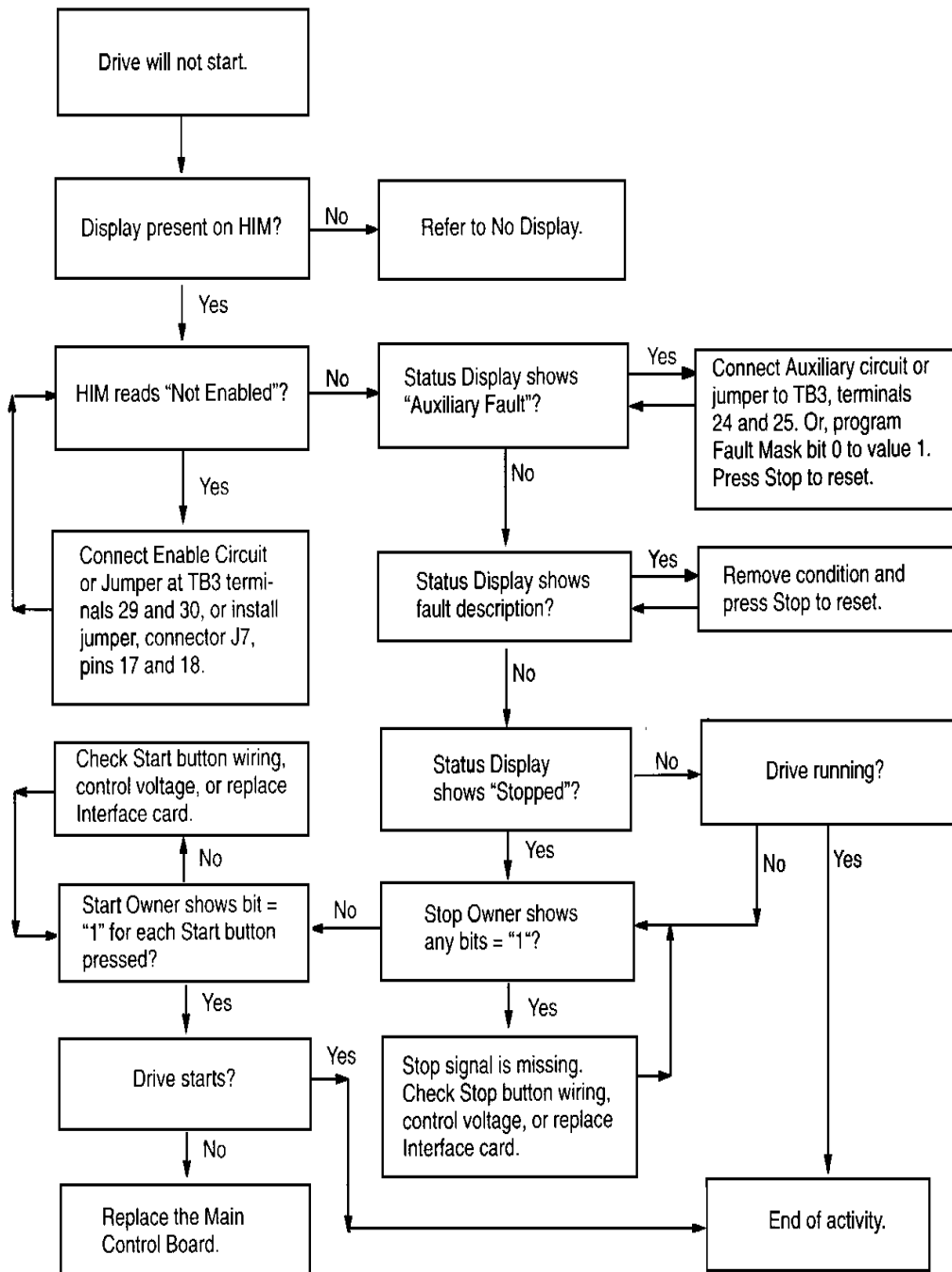


## 1336PLUS Troubleshooting Flow Chart

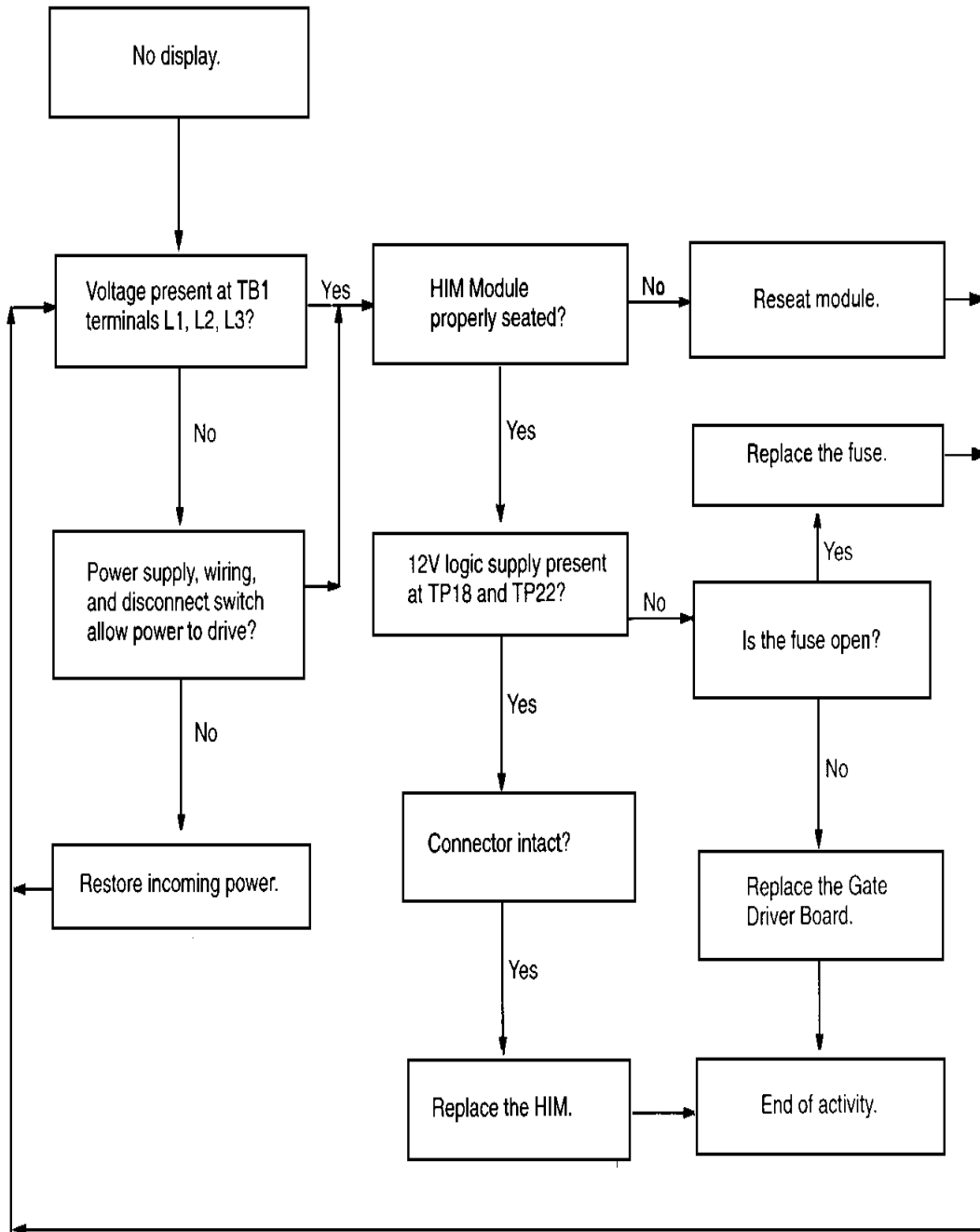
### Diagnostic Procedures by symptom

These charts list drive symptoms, symptom descriptions, and recommended actions to remedy the symptoms.

#### Drive Will Not Start

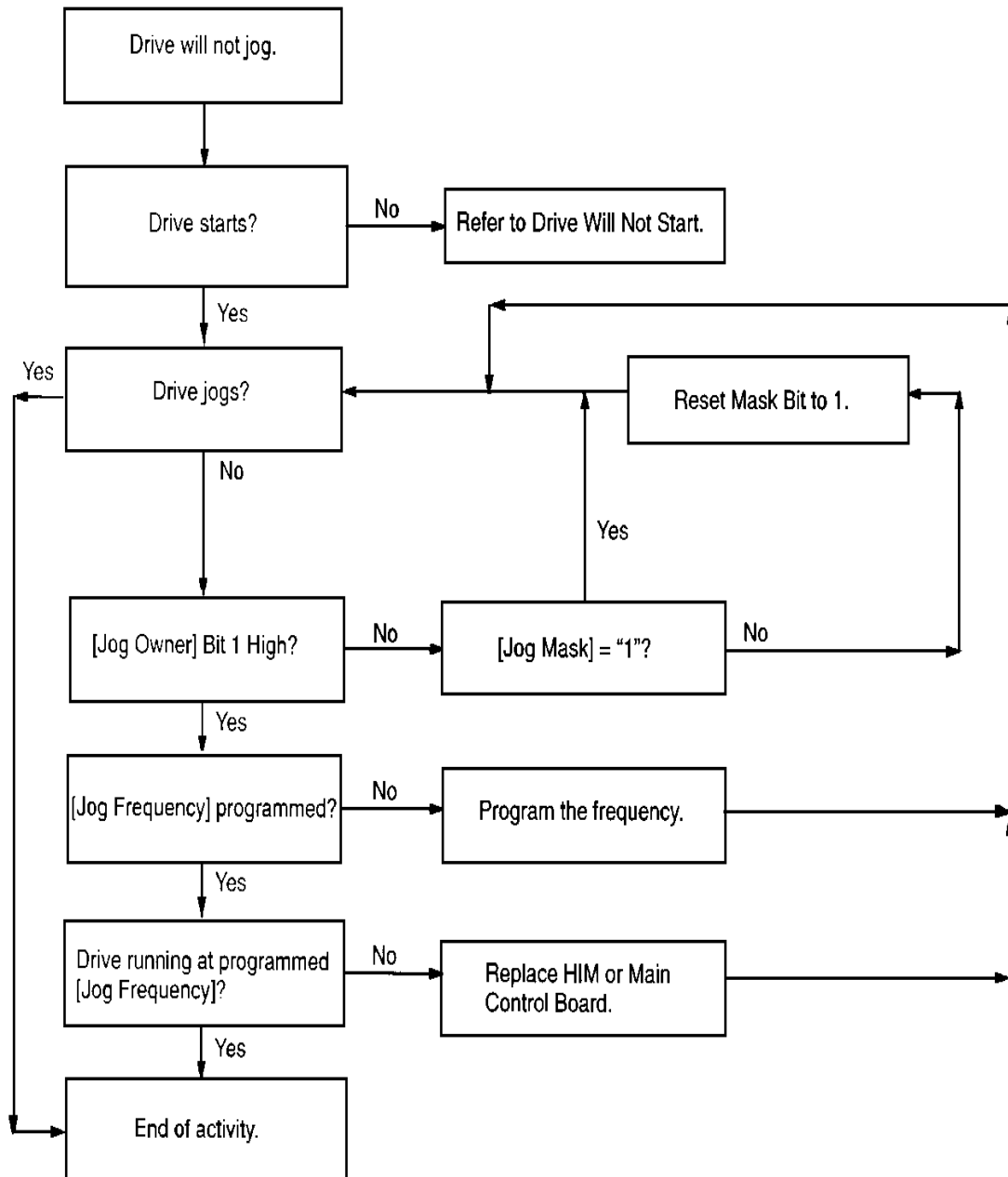


## No Display



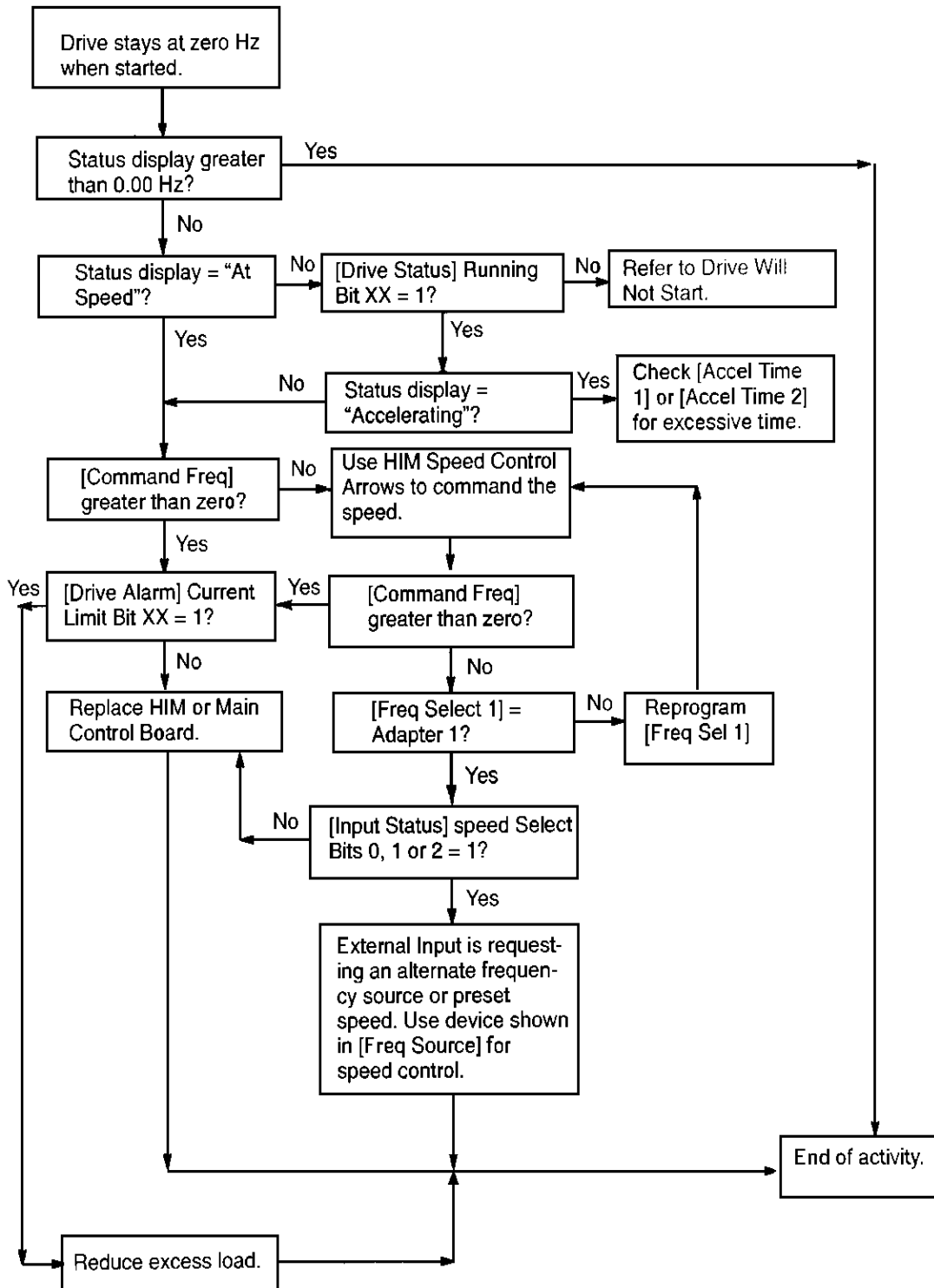
## Drive Will Not Jog

Local Human Interface Module used to control drive. JOG is not active if a START command is present. START command always overrides a JOG command.



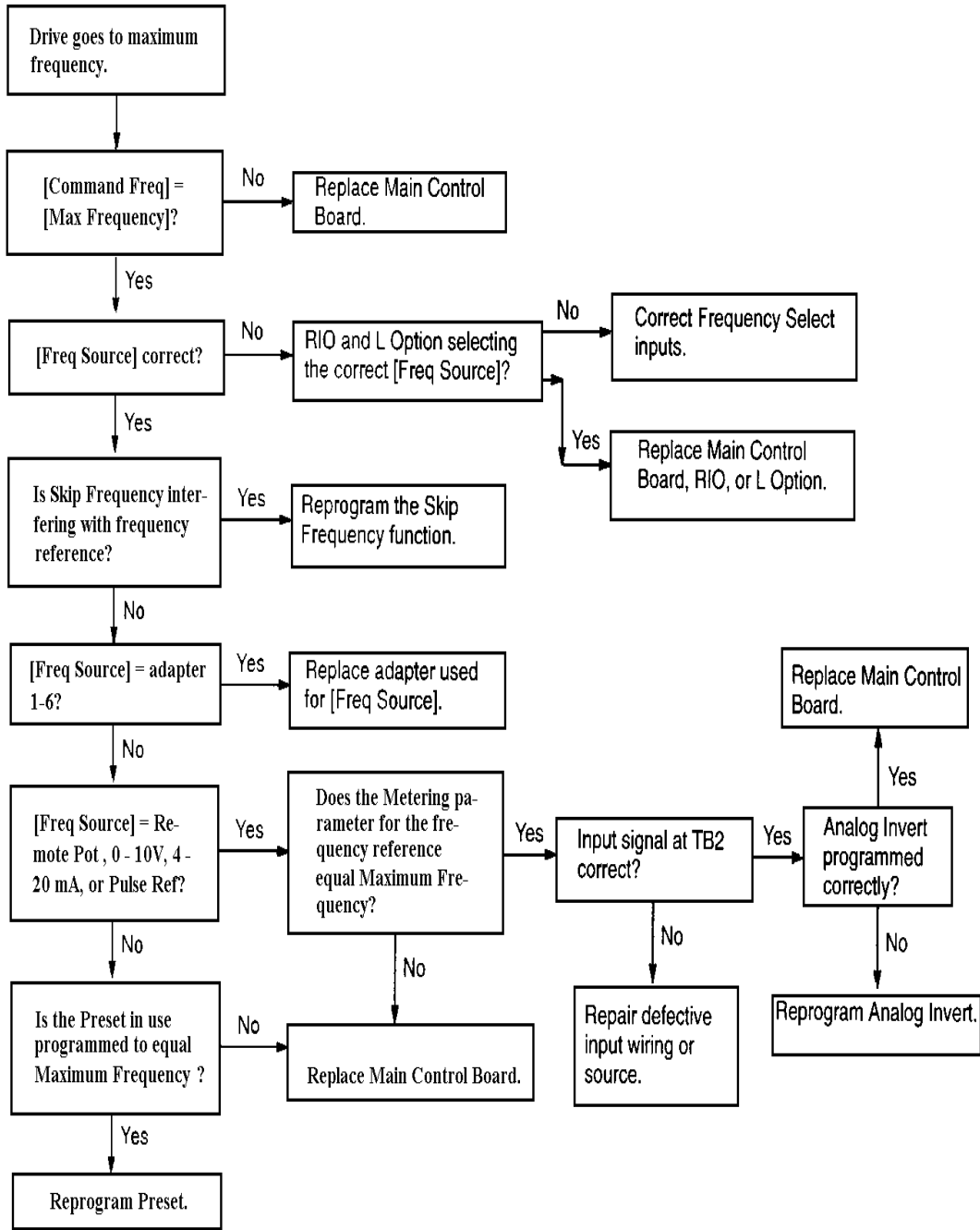
## Drive Stays at Zero Hertz When Started

Important: [Command Frequency] parameter in the Metering Group can be checked using the HIM.



## Drive Goes to Max Frequency

Important: [Command Frequency] parameter in the Metering Group can be checked using the HIM.



## Clearing Faults

After correcting a fault, you can clear a fault from the drive in one of two ways:

- 1.) Cycle the input power to the drive.
- 2.) Press the Stop button. This only works if [Fault Mask] bit 1 is set to 1 and [Fault Clear Mode] is enabled.