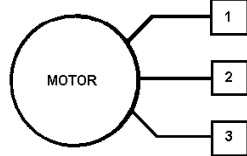
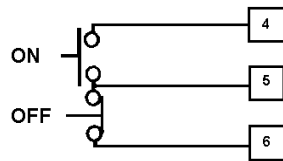


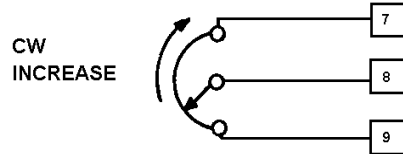
TB 1



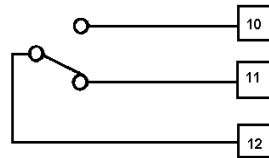
NOTE: The Bulletin 1340 Adjustable Frequency Drive is designed to operate from a three-phase, 230V AC, 60 Hz input and will control a three-phase motor with a maximum output voltage of 230V AC. If other input or output voltages are required, transformers are used and should be connected to the drive as indicated on the transformers.



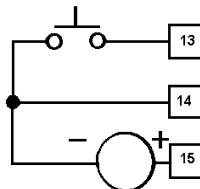
ON/OFF



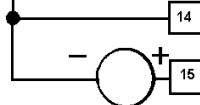
SPEED POT



FORWARD/REVERSE SWITCH*



RATED STOP SWITCH*



SPEED METER*

*OPTIONAL