

The following pertains to Flashing the PowerFlex 700S Phase II Control Drive Using Hyperterminal ONLY.

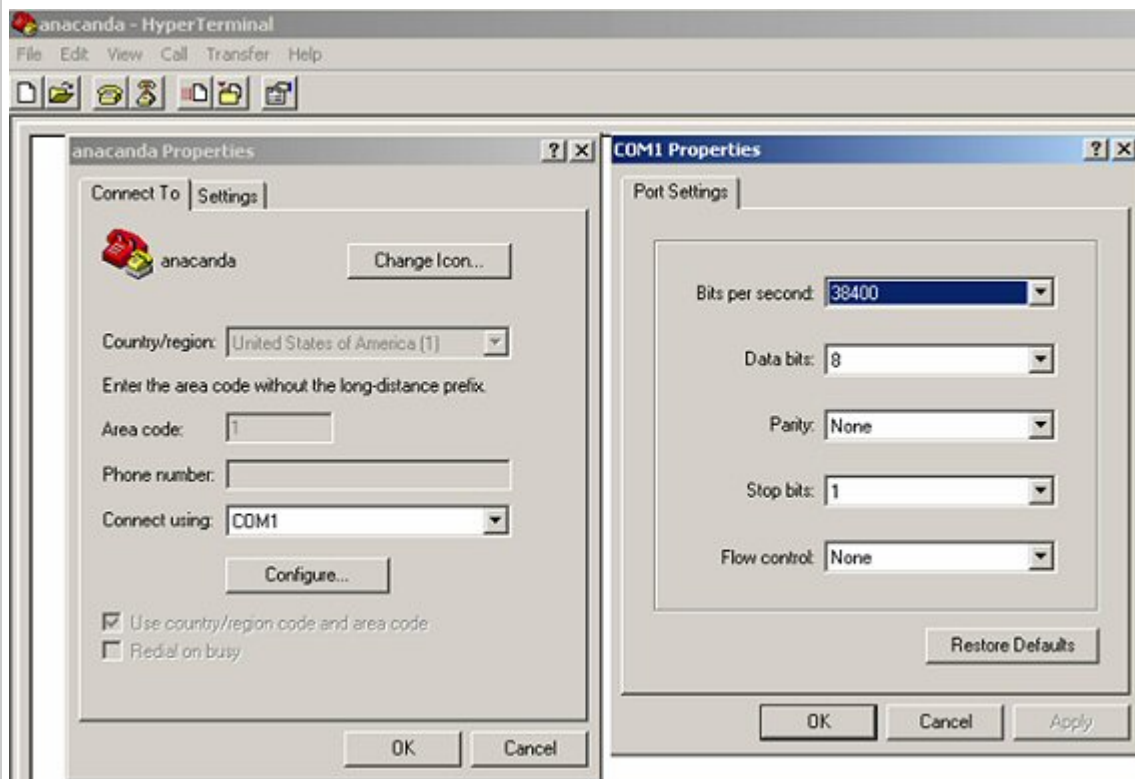
The PowerFlex 700S Phase II Firmware Release consists of two "binary" files. These files are downloaded to the drive using HyperTerminal and the 1203-SSS communication Module.

The 1203-SSS firmware is V3.004 or higher. The HyperTerminal program is copyright 1999 (no revision levels).

The two files are as follows:

Boot: 700S2bt0x_xx.bin
App: 700S2ap0x_xx.bin

These two files need to be placed in a "temp" directory. The HyperTerminal communication setup is as follows:



Once connected to the Powerflex 700S Phase II drive with the Anacanda in Hyperterminal, you will get a screen similar to the one below:

```
Anacanda - HyperTerminal
File Edit View Call Transfer Help

1203-SSS Smart Self-powered Serial Converter - DPI, Revision 3.005, Build 1
Main Menu - Enter Number for Selection
1> Display Setup Parameters
2> Display Event Queue
3> Flash Upgrade

Flash Upgrade - Enter Number for Selection
0> PowerFlex 700S 2
1> LCD Module
2> This 1203-SSS

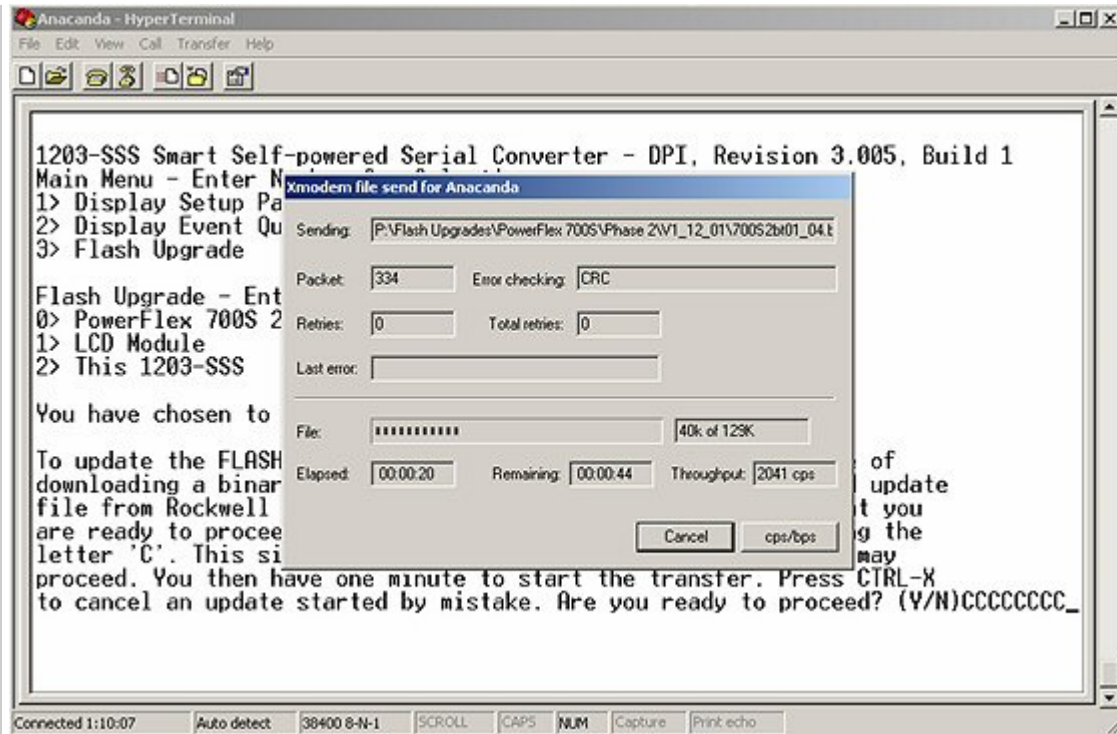
You have chosen to update -- 0> PowerFlex 700S 2

To update the FLASH memory, you need a terminal program capable of
downloading a binary file using the XMODEM protocol and a FLASH update
file from Rockwell Automation. When you press 'Y' to signal that you
are ready to proceed, the terminal program will start displaying the
letter 'C'. This signals the XMODEM protocol that the download may
proceed. You then have one minute to start the transfer. Press CTRL-X
to cancel an update started by mistake. Are you ready to proceed? (Y/N)_
```

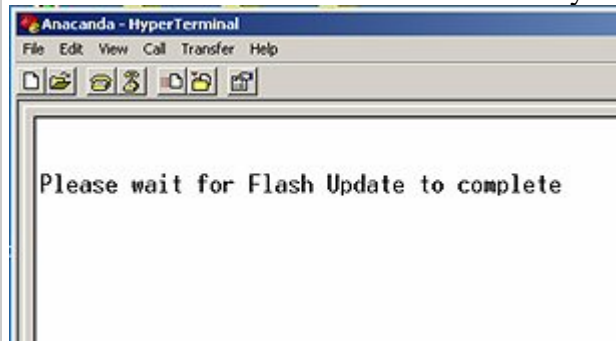
Connected 0:00:10 | Auto detect | 38400 8-N-1 | SCROLL | CAPS | NUM | Capture | Print echo

Select Option "3" Flash Upgrade, then select option "0" for PowerFlex 700S 2, then choose "Y" for yes ready to proceed.

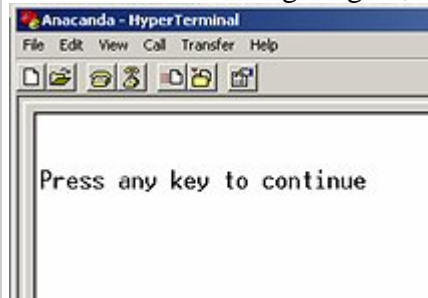
Then go to "Transfer" menu and "Send" and then Browse. Select the correct boot .bin file, i.e. 700S2bt0x_xx.bin. Under normal circumstances, the boot file will take about one minute to transfer to the drive.



After the normal one minute time has elapsed, the following screen will be shown for about 30 seconds. You do not need to do anything here.



After the screen changes again, hit any key on your keyboard to continue.



The boot code is now flashed into the drive. The application code follows similar instructions as the boot code. Connecting with Hyperterminal again, you will see a screen similar to the following:

```
Anacanda - HyperTerminal
File Edit View Call Transfer Help
1203-SSS Smart Self-powered Serial Converter - DPI, Revision 3.005, Build 1
Main Menu - Enter Number for Selection
1> Display Setup Parameters
2> Display Event Queue
3> Flash Upgrade

Flash Upgrade - Enter Number for Selection
0> PowerFlex 700S 2
1> LCD Module
2> This 1203-SSS

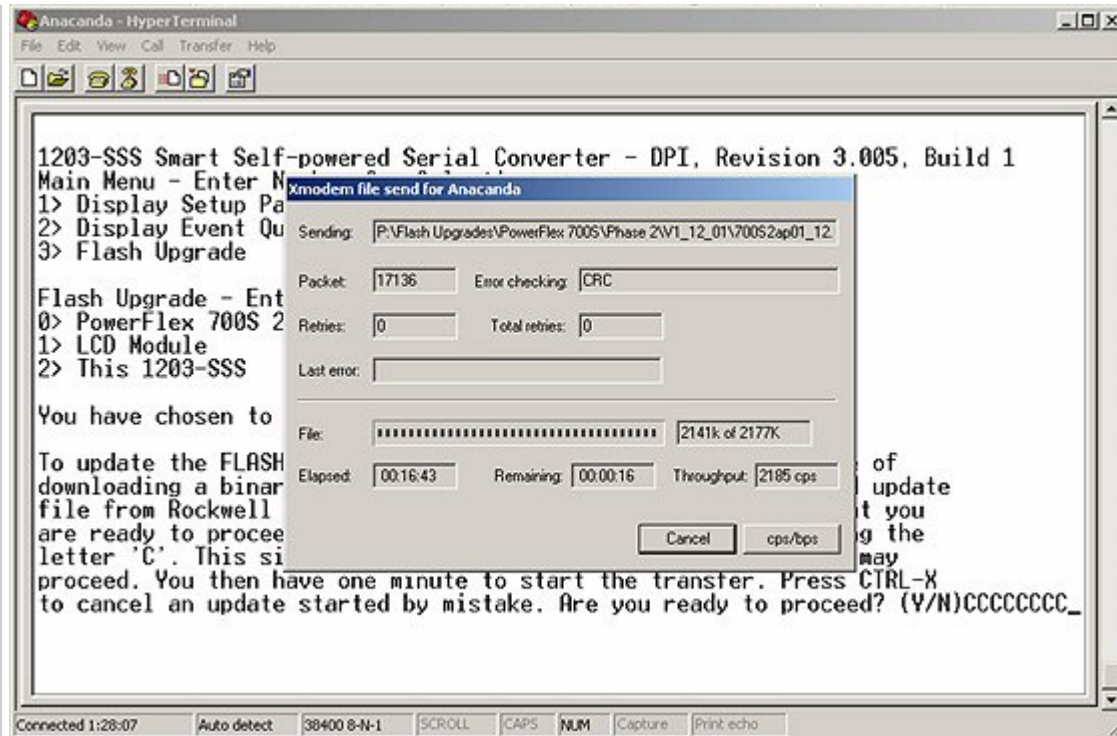
You have chosen to update -- 0> PowerFlex 700S 2

To update the FLASH memory, you need a terminal program capable of
downloading a binary file using the XMODEM protocol and a FLASH update
file from Rockwell Automation. When you press 'Y' to signal that you
are ready to proceed, the terminal program will start displaying the
letter 'C'. This signals the XMODEM protocol that the download may
proceed. You then have one minute to start the transfer. Press CTRL-X
to cancel an update started by mistake. Are you ready to proceed? (Y/N)_

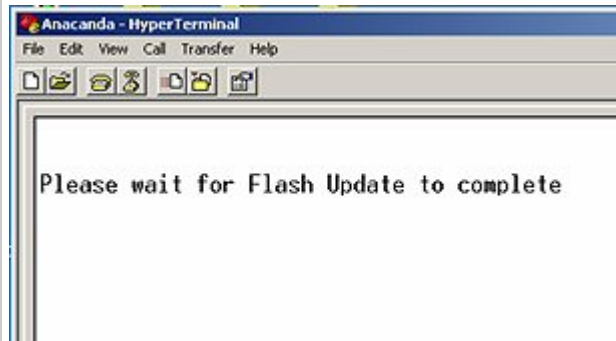
Connected 0:00:10 Auto detect 38400 8-N-1 SCROLL CAPS NUM Capture Print echo
```

First you will select option "3" for Flash Upgrade, then select "0" for the PowerFlex 700S 2, then choose "Y" for yes ready to proceed.

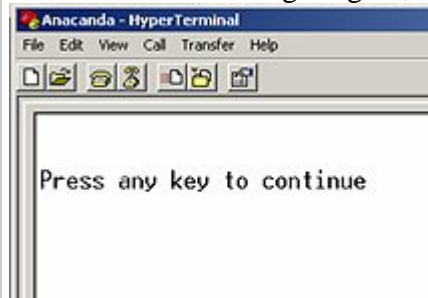
Then go to "Transfer" menu and "Send" and then Browse. Select the application code .bin file, i.e. 700S2ap0x_xx.bin. Under normal circumstances, it will take approximately 17 minutes to transfer the application code to the drive. During flashing, you will see a screen similar to the one below:



After the normal seventeen minutes time has elapsed, the following screen will be shown for about 120 seconds. You do not need to do anything here.



After the screen changes again, hit any key on your keyboard to continue.



Your drive is now fully updated. It is recommended to cycle power to the drive after all flashing procedures have completed.