



1203-SSS Smart Self-powered Serial Converter Firmware v3.006

This release note describes major revision 3, minor revision 6 of firmware for the 1203-SSS converter.

Important: Any firmware version v3.002 or lower must first be flash updated to firmware version v3.003. Then, the firmware can be flash updated again to any firmware version 3.004 or higher.

Introduction

The following information is included in this document:

For information about:	See page:
Enhancements	1
Corrected Anomalies	1
Determining Firmware Revision	2
Firmware Flashing	4
Restrictions	7
Compatible Revisions	7
Rockwell Automation Support	8
Product Satisfaction Return	8

Enhancements

This section describes the enhancement provided in this revision of firmware:

- The Diamond LED now flashes red to indicate that a PCCC (Programmable Controller Communications Command) control timeout has occurred, and will continue flashing red until it receives another DF1 message.

Corrected Anomalies

This section describes the anomalies corrected in this revision of firmware:

- When DriveExplorer connected too quickly, the 1203-SSS did not reset after flashing another connected peripheral.
- Prevents data corruption in the SCANport Block Transfer emulation routine that caused communication errors with DriveTools SP software tools (DriveExecutive and DriveObserver).

Determining Firmware Revision

This section describes procedures to determine the firmware revision of your 1203-SSS converter.

Using the LCD HIM (20-HIM-**)

Step	Key(s)	Example Screens																		
1. In the Main Menu, press the Up Arrow or Down Arrow to scroll to Device Select .	▲ OR ▼	<table border="1"> <tr> <td>F-></td> <td>Stopped</td> <td>Auto</td> </tr> <tr> <td></td> <td>0.00</td> <td>Hz</td> </tr> <tr> <td colspan="3">Main Menu:</td> </tr> <tr> <td colspan="3">Parameter</td> </tr> <tr> <td colspan="3">Device Select</td> </tr> <tr> <td colspan="3">Memory Storage</td> </tr> </table>	F->	Stopped	Auto		0.00	Hz	Main Menu:			Parameter			Device Select			Memory Storage		
F->	Stopped	Auto																		
	0.00	Hz																		
Main Menu:																				
Parameter																				
Device Select																				
Memory Storage																				
2. Press Enter to enter your selection.	↵																			
3. Press the Up Arrow or Down Arrow to scroll to the 1203-SSS serial converter.	▲ OR ▼																			
4. Press Enter to select the serial converter. The main menu for the converter will appear.	↵																			
5. Press the Up Arrow or Down Arrow to scroll to Diagnostics .	▲ OR ▼	<table border="1"> <tr> <td>Port 2 Device</td> </tr> <tr> <td>1203-SSS</td> </tr> <tr> <td>Main Menu:</td> </tr> <tr> <td>Diagnostics</td> </tr> <tr> <td>Parameter</td> </tr> <tr> <td>Device Select</td> </tr> </table>	Port 2 Device	1203-SSS	Main Menu:	Diagnostics	Parameter	Device Select												
Port 2 Device																				
1203-SSS																				
Main Menu:																				
Diagnostics																				
Parameter																				
Device Select																				
6. Press Enter to enter your selection.	↵																			
7. Press the Up Arrow or Down Arrow to scroll to Device Version .	▲ OR ▼	<table border="1"> <tr> <td>Port 2 Device</td> </tr> <tr> <td>1203-SSS</td> </tr> <tr> <td>Diag: Prodct Ver</td> </tr> <tr> <td>FW Ver: 3.005</td> </tr> <tr> <td>Series: B</td> </tr> <tr> <td>Date: 02/03/2006</td> </tr> </table>	Port 2 Device	1203-SSS	Diag: Prodct Ver	FW Ver: 3.005	Series: B	Date: 02/03/2006												
Port 2 Device																				
1203-SSS																				
Diag: Prodct Ver																				
FW Ver: 3.005																				
Series: B																				
Date: 02/03/2006																				
8. Press Enter to display the Product Data screen.	↵																			
9. Press Enter again to display the converter's firmware version.	↵																			

Using HyperTerminal

1. Launch HyperTerminal and, using a 1203-SFC cable, go online with the 1203-SSS module that is connected to the powered drive. For information on how to go online using HyperTerminal, please refer to the *1203-SSS User Manual* (publication 20COMM-UM001).
2. Press the **Enter** key until the main menu ([Figure 1](#)) appears.

Figure 1 Main Menu

```
1203-SSS Smart Self-powered Serial Converter, Series B, Revision 3.005 Build 4
Main Menu - Enter Number for Selection
1> Display Setup Parameters
2> Display Event Queue
3> Flash Upgrade
```

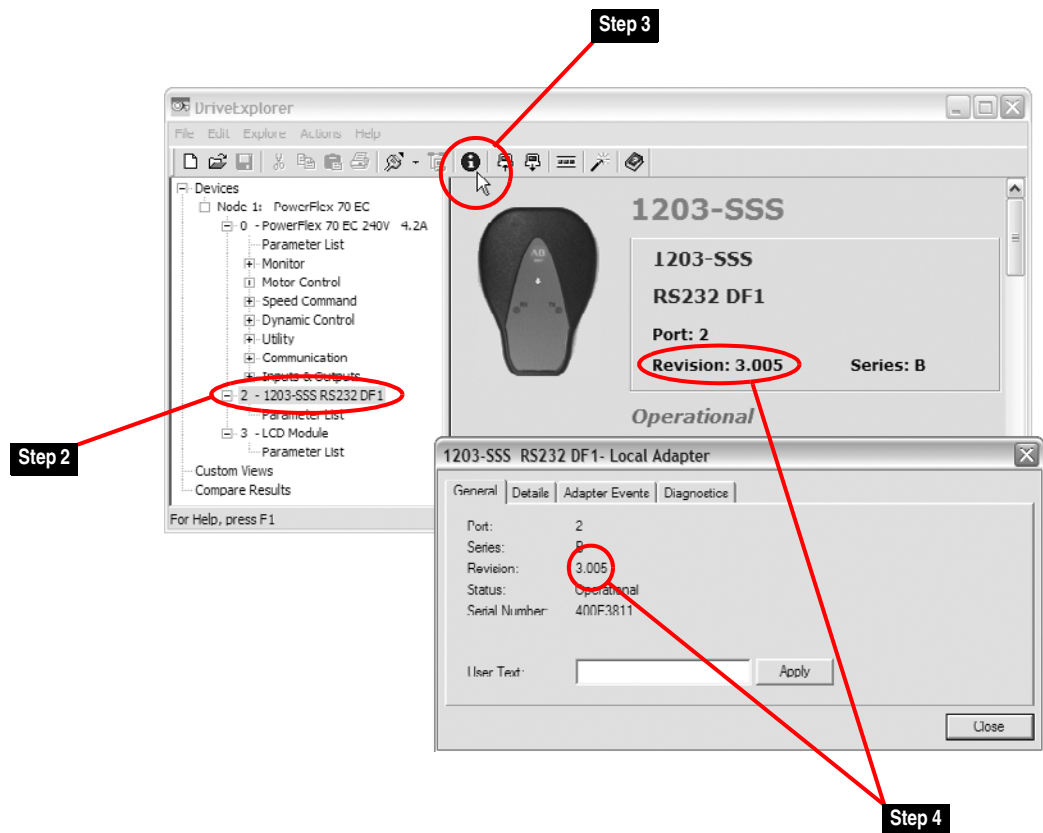
Using DriveExplorer Lite/Full

1. Launch DriveExplorer and go online with the drive that is connected to the 1203-SSS converter.
2. In the DriveExplorer treeview, click on 1203-SSS RS232 DF1 as shown in [Figure 2](#).
3. Click the information icon to display the converter's properties screen.
4. The "Revision:" field shows the present revision (for example, 3.005) of the converter firmware.



TIP: When clicking on the 1203-SSS converter using version 5.01 or higher DriveExplorer Lite/Full, the converter firmware revision is also shown in the right pane of the DriveExplorer window.

Figure 2 Information Icon in DriveExplorer Window

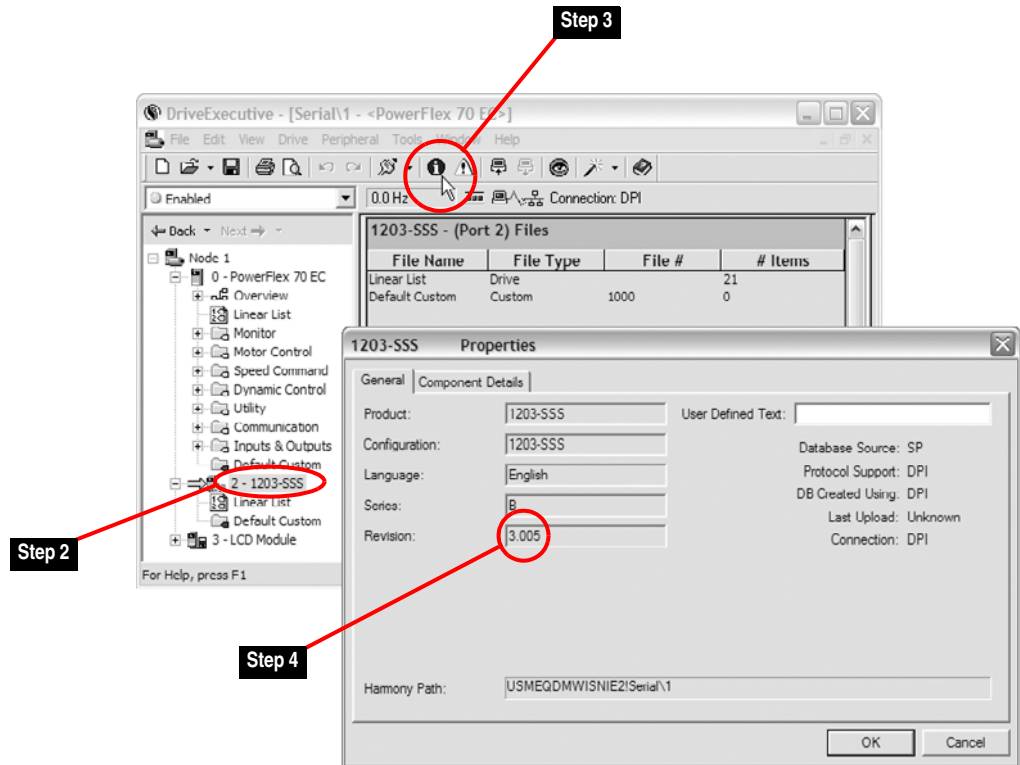


Using DriveExecutive

1. Launch DriveExecutive and go online with the drive that is connected to the 1203-SSS converter.
2. In the DriveExecutive treeview, click on 1203-SSS as shown in [Figure 3](#).

3. Click the information icon to display the converter's Properties screen.
4. The "Revision:" field shows the present revision (for example, 3.005) of the converter firmware.

Figure 3 Information Icon in DriveExecutive Window



Firmware Flashing

This section describes procedures to flash upgrade your converter firmware. Flash kits for drives, communications adapters, and peripherals are provided on the Allen-Bradley Web Updates site located at <http://www.ab.com/support/abdrives/webupdate>.



ATTENTION: Risk of permanent equipment damage exists. Once a flash update has been started, do not remove power from the drive until after the download has completed and the Diamond LED status indicator on the 1203-SSS becomes FLASHING GREEN. If power is removed before this occurs, the 1203-SSS may be permanently damaged. A 1203-SSS that has been damaged in this way cannot be repaired.

Important: Any firmware version v3.002 or lower must first be flash updated to firmware version v3.003. Then, the firmware can be flash updated again to any firmware version 3.004 or higher.

Installing the Flash Kit

1. Install the flash kit utility from the Allen-Bradley Web Updates site for the 1203-SSS serial converter. (This also automatically installs the latest version of the ControlFLASH utility on your computer.)
2. You are now ready to use DriveExplorer, DriveExecutive or ControlFLASH to update the converter. Follow the instructions in the appropriate section below.

Using HyperTerminal

1. With the Flash Kit installed (see [Installing the Flash Kit](#)), launch HyperTerminal and, using a 1203-SFC cable, go online with the 1203-SSS that is connected to the powered drive. For information on how to go online using HyperTerminal, please refer to the *1203-SSS User Manual* (publication 20COMM-UM001).
2. Press the **Enter** key until the main menu ([Figure 4](#)) appears.

Figure 4 Main Menu

```
Main Menu - Enter Number for Selection
1> Display Setup Parameters
2> Display Event Queue
3> Flash Upgrade
```

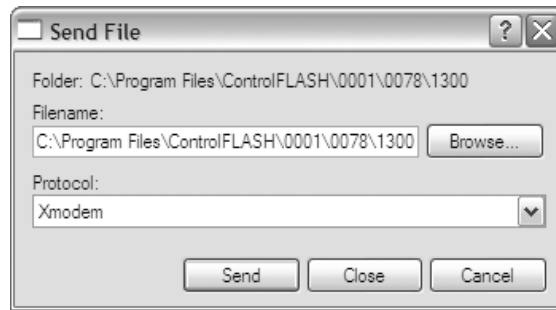
3. In the main menu, press **3** to flash upgrade. Then press **Y** (for Yes) to update the flash code. The terminal program will start displaying the letter “C”. This signals the XMODEM protocol that the download may proceed. You then have one minute to start the transfer. Press **CTRL-X** to cancel an update started by mistake.



ATTENTION: Risk of injury or equipment damage exists. When you perform a flash update, the drive will fault if it is receiving control I/O from the 1203-EN1. Verify that the drive has stopped safely or is receiving control I/O from an alternate source before beginning a flash update.

4. Select **Transfer > Send File** to display the Send File screen ([Figure 5](#)).
5. Click **Browse** and navigate to the flash file located in:

C:\Program Files\ControlFLASH\0001\0078\1300
6. Double-click only the “1203-SSS_03_006_04_COMBO.bin” file. Its name appears in the Filename box (see [Figure 5](#)).
7. In the Protocol box, select “Xmodem.”

Figure 5 Send File Screen

8. Click **Send**. A dialog box appears and reports the progress of the update. When it is complete, the message “Flash Complete” appears. HyperTerminal also checks the new firmware in the module and resets the module.

Important: Keep the device powered for 15 seconds after the operation has completed or until the adapter MOD status indicator starts flashing green.

9. Press the **Enter** key to return to the main menu which should now show the new firmware revision.

Using DriveExplorer Lite/Full

1. With the Flash Kit installed (see [Installing the Flash Kit on page 5](#)), launch DriveExplorer and go online with the drive that is connected to the 1203-SSS converter.
2. In the DriveExplorer treeview, click on the 1203-SSS converter. Then click the information icon as shown in [Figure 2](#) to display the converter’s Properties screen.
3. On the 1203-SSS Properties screen, click the Details tab.

Important: This update may cause the 1203-SSS parameters to revert to their default values. You may want to save your configuration using DriveExplorer or the HIM CopyCat feature before upgrading.

4. To start the flash update, click the **Flash Update...** button. Follow the screen prompts until the flash update procedure completes and displays the new firmware revision (v3.006).

Using DriveExecutive

1. With the Flash Kit installed (see [Installing the Flash Kit on page 5](#)), launch DriveExecutive and go online with the drive that is connected to the 1203-SSS converter.
2. In the DriveExecutive treeview, click on the 1203-SSS converter. Then click the information icon as shown in [Figure 3](#) to display the converter's Properties screen.
3. On the 1203-SSS Properties screen, click the Component Details tab.

Important: This update may cause the 1203-SSS parameters to revert to their default values. You may want to save your configuration using DriveExecutive or the HIM CopyCat feature before upgrading.

4. To start the flash update, click the **Flash Update** button. Follow the screen prompts until the flash update procedure completes and displays the new firmware revision (v3.006).

Using ControlFLASH

1. With the Flash Kit installed (see [Installing the Flash Kit on page 5](#)), launch ControlFLASH by selecting **Start > (All) Programs > Flash Programming Tools > ControlFLASH**.
2. Choose the 1203-SSS v3.006 update from the list of available updates.

Important: This update may cause the 1203-SSS parameters to revert to their default values. You may want to save your configuration using the HIM CopyCat feature, DriveExplorer or DriveExecutive before upgrading.

3. Follow the screen prompts until the flash procedure completes and displays the new firmware revision (v3.006).

Restrictions

No restrictions apply to this revision of firmware.

Compatible Revisions

To use this revision of firmware, update your system tools as follows:

Update this:	To this version or later:
DriveExplorer Lite/Full	4.01
DriveExecutive	3.01
PowerFlex 7-Class Drive	all versions compatible
LCD HIM	all versions compatible
RSLinx Classic	2.43

Rockwell Automation Support

Rockwell Automation provides technical information on the web to assist you in using our products. At <http://support.rockwellautomation.com>, you can find technical manuals, a knowledge base of Frequently Asked Questions (FAQs), technical and application notes, sample code and links to software service packs, and a MySupport feature that you can customize to make the best use of these tools.

Rockwell Automation also provides complimentary phone support for drives, communication adapters, and peripherals. If you experience a problem with the 1203-SSS converter, please review the information in its User Manual. For further help in getting your converter operational, contact a Customer Support representative:

United States	(1) 262.512.8176 Monday – Friday, 7am – 6pm CST
Outside United States	Please contact your local Rockwell Automation representative for any technical support issues.

For an additional level of technical phone support for installation, configuration and troubleshooting, we offer TechConnect Support programs. For more information, contact your local distributor or Rockwell Automation representative, or visit <http://support.rockwellautomation.com>.

Product Satisfaction Return

Rockwell Automation tests all products to ensure that they are fully operational when shipped from the manufacturing facility. However, if your product is not functioning and needs to be returned:

United States	Contact your distributor. You must provide a Customer Support case number (see phone number above to obtain one) to your distributor to complete the return process.
Outside United States	Please contact your local Rockwell Automation representative for return procedure.

U.S. Allen-Bradley Drives Technical Support - Tel: (1) 262.512.8176, Fax: (1) 262.512.2222, Email: support@drives.ra.rockwell.com, Online: www.ab.com/support/abdrives

www.rockwellautomation.com

Power, Control and Information Solutions Headquarters

Americas: Rockwell Automation, 1201 South Second Street, Milwaukee, WI 53204-2496 USA, Tel: (1) 414.382.2000, Fax: (1) 414.382.4444

Europe/Middle East/Africa: Rockwell Automation, Vorstlaan/Boulevard du Souverain 36, 1170 Brussels, Belgium, Tel: (32) 2 663 0600, Fax: (32) 2 663 0640

Asia Pacific: Rockwell Automation, Level 14, Core F, Cyberport 3, 100 Cyberport Road, Hong Kong, Tel: (852) 2887 4788, Fax: (852) 2508 1846