



1203-USB Converter Firmware v1.003

This release note describes major revision 1, minor revision 3 of firmware for the 1203-USB converter.

Important: Firmware version v1.003 can only be flash updated into a 1203-USB converter that has firmware version v1.002. If the converter has firmware version v1.001, you must first flash update to firmware version v1.002, and then flash update again to firmware version v1.003.

Introduction

The following information is included in this document:

For information about:	See page:
Enhancements	1
Corrected Anomalies	1
Determining Firmware Revision	2
Firmware Flashing	4
Restrictions	6
Compatible Revisions	6
Rockwell Automation Support	7
Product Satisfaction Return	7

Enhancements

This section describes the enhancement provided in this revision of firmware:

- Added support for flashing a PowerFlex 4M drive.

Corrected Anomalies

This section describes the anomaly corrected in this revision of firmware:

- Fixed a problem that caused a PowerFlex 7-Class drive to fault when it was powered up while the 1203-USB converter was connected.

Determining Firmware Revision

This section describes procedures to determine the firmware revision of your 1203-USB converter.

Using the LCD HIM (20-HIM-**)

Step	Key(s)	Example Screens																		
1. In the Main Menu, press the Up Arrow or Down Arrow to scroll to Device Select .	▲ OR ▼	<table border="1"> <tr> <td>F-></td> <td>Stopped</td> <td>Auto</td> </tr> <tr> <td></td> <td>0.00</td> <td>Hz</td> </tr> <tr> <td colspan="3">Main Menu:</td> </tr> <tr> <td colspan="3">Parameter</td> </tr> <tr> <td colspan="3">Device Select</td> </tr> <tr> <td colspan="3">Memory Storage</td> </tr> </table>	F->	Stopped	Auto		0.00	Hz	Main Menu:			Parameter			Device Select			Memory Storage		
F->	Stopped	Auto																		
	0.00	Hz																		
Main Menu:																				
Parameter																				
Device Select																				
Memory Storage																				
2. Press Enter to enter your selection.	↵																			
3. Press the Up Arrow or Down Arrow to scroll to the 1203-USB converter.	▲ OR ▼																			
4. Press Enter to select the serial converter. The main menu for the converter will appear.	↵	<table border="1"> <tr> <td>Port 2 Device</td> </tr> <tr> <td>1203-USB</td> </tr> <tr> <td>Main Menu:</td> </tr> <tr> <td>Diagnostics</td> </tr> <tr> <td>Parameter</td> </tr> <tr> <td>Device Select</td> </tr> </table>	Port 2 Device	1203-USB	Main Menu:	Diagnostics	Parameter	Device Select												
Port 2 Device																				
1203-USB																				
Main Menu:																				
Diagnostics																				
Parameter																				
Device Select																				
5. Press the Up Arrow or Down Arrow to scroll to Diagnostics .	▲ OR ▼																			
6. Press Enter to enter your selection.	↵																			
7. Press the Up Arrow or Down Arrow to scroll to Device Version .	▲ OR ▼	<table border="1"> <tr> <td>Port 2 Device</td> </tr> <tr> <td>1203-USB</td> </tr> <tr> <td>Diag: Prodct Ver</td> </tr> <tr> <td>FW Ver: 1.002</td> </tr> <tr> <td>Series: A</td> </tr> <tr> <td>Date: 09/03/2007</td> </tr> </table>	Port 2 Device	1203-USB	Diag: Prodct Ver	FW Ver: 1.002	Series: A	Date: 09/03/2007												
Port 2 Device																				
1203-USB																				
Diag: Prodct Ver																				
FW Ver: 1.002																				
Series: A																				
Date: 09/03/2007																				
8. Press Enter to display the Product Data screen.	↵																			
9. Press Enter again to display the converter's firmware version.	↵																			

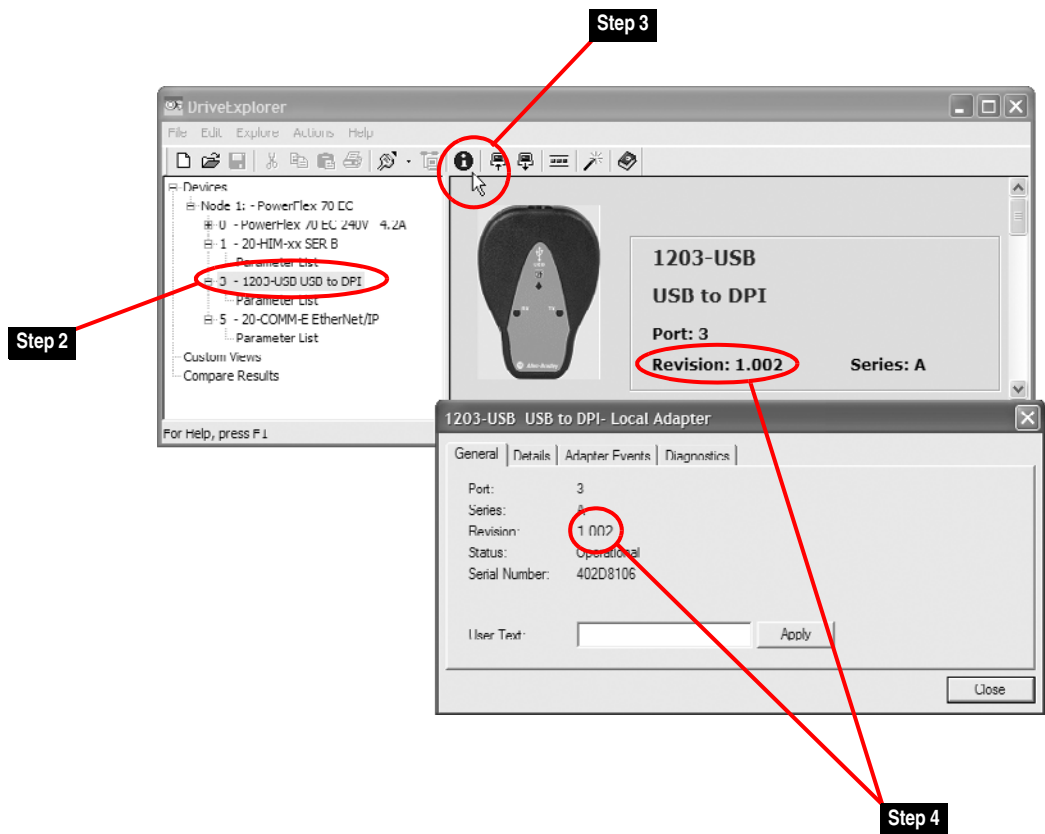
Using DriveExplorer Lite/Full

1. Launch DriveExplorer and go online with the drive that is connected to the 1203-USB converter.
2. In the DriveExplorer treeview, click on 1203-USB as shown in [Figure 1](#).
3. Click the information icon to display the converter's properties screen.
4. The "Revision:" field shows the present revision (for example, 1.002) of the converter firmware.



TIP: When clicking on the 1203-USB converter using version 5.01 or higher DriveExplorer Lite/Full, the converter firmware revision is also shown in the right pane of the DriveExplorer window.

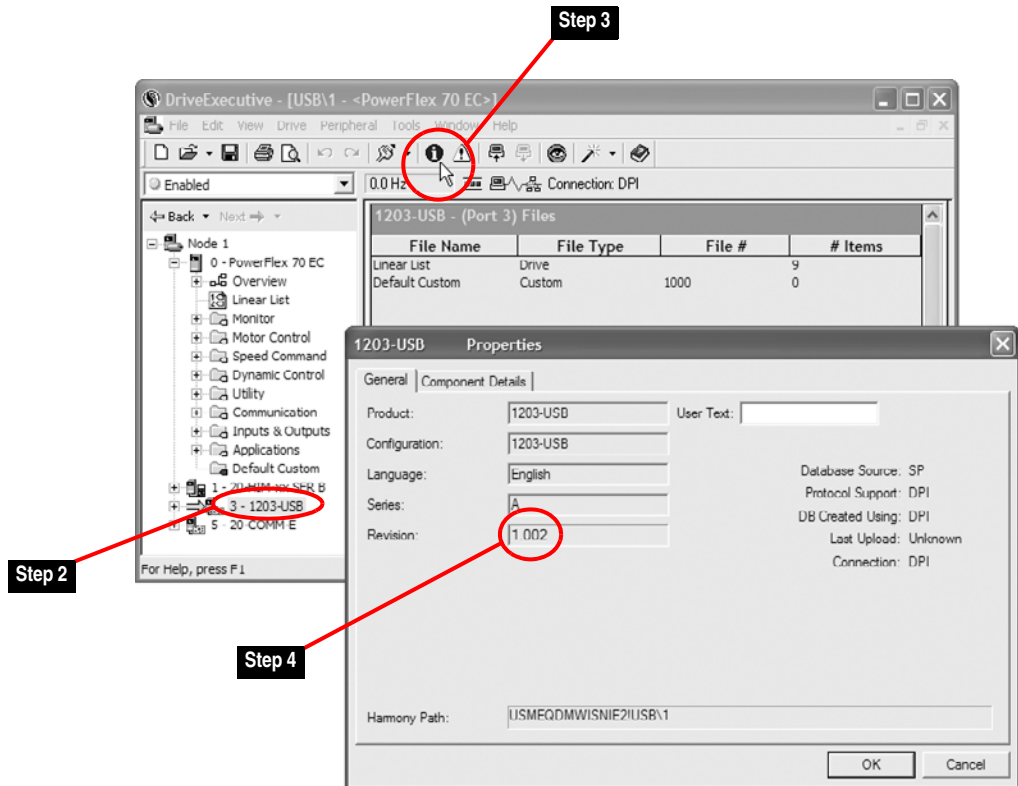
Figure 1 Information Icon in DriveExplorer Window



Using DriveExecutive

1. Launch DriveExecutive and go online with the drive that is connected to the 1203-USB converter.
2. In the DriveExecutive treeview, click on 1203-USB as shown in [Figure 2](#).
3. Click the information icon to display the converter's Properties screen.
4. The "Revision:" field shows the present revision (for example, 1.002) of the converter firmware.

Figure 2 Information Icon in DriveExecutive Window



Firmware Flashing

This section describes procedures to flash upgrade your converter firmware. Flash kits for drives, communications adapters, and peripherals are provided on the Allen-Bradley Web Updates site located at <http://www.ab.com/support/abdrives/webupdate>.



ATTENTION: Risk of permanent equipment damage exists. Once a flash update has been started, do not remove power from the drive until after the download has completed and the Diamond LED status indicator on the 1203-USB becomes FLASHING GREEN. If power is removed before this occurs, the 1203-USB may be permanently damaged. A 1203-USB that has been damaged in this way cannot be repaired.

Installing the Flash Kit

1. Install the flash kit utility from the Allen-Bradley Web Updates site for the 1203-USB serial converter. (This also automatically installs the latest version of the ControlFLASH utility on your computer.)
2. You are now ready to use DriveExplorer, DriveExecutive or ControlFLASH to update the converter. Follow the instructions in the appropriate section below.

Using DriveExplorer Lite/Full

1. With the Flash Kit installed (see [Installing the Flash Kit](#)), launch DriveExplorer and go online with the drive that is connected to the 1203-USB converter.
2. In the DriveExplorer treeview, click on the 1203-USB converter. Then click the information icon as shown in [Figure 1](#) to display the converter's Properties screen.
3. On the 1203-USB Properties screen, click the Details tab.

Important: This update may cause the 1203-USB parameters to revert to their default values. You may want to save your configuration using DriveExplorer or the HIM CopyCat feature before upgrading.

4. To start the flash update, click the **Flash Update...** button. Follow the screen prompts until the flash update procedure completes and displays the new firmware revision (v1.003).

Using DriveExecutive

1. With the Flash Kit installed (see [Installing the Flash Kit](#)), launch DriveExecutive and go online with the drive that is connected to the 1203-USB converter.
2. In the DriveExecutive treeview, click on the 1203-USB converter. Then click the information icon as shown in [Figure 2](#) to display the converter's Properties screen.
3. On the 1203-USB Properties screen, click the Component Details tab.

Important: This update may cause the 1203-USB parameters to revert to their default values. You may want to save your configuration using DriveExecutive or the HIM CopyCat feature before upgrading.

4. To start the flash update, click the **Flash Update** button. Follow the screen prompts until the flash update procedure completes and displays the new firmware revision (v1.003).

Using ControlFLASH

1. With the Flash Kit installed (see [Installing the Flash Kit on page 5](#)), launch ControlFLASH by selecting **Start > (All) Programs > Flash Programming Tools > ControlFLASH**.

2. Choose the 1203-USB v1.003 update from the list of available updates.

Important: This update may cause the 1203-USB parameters to revert to their default values. You may want to save your configuration using the HIM CopyCat feature, DriveExplorer or DriveExecutive before upgrading.

3. Follow the screen prompts until the flash procedure completes and displays the new firmware revision (v1.003).

Restrictions

No restrictions apply to this revision of firmware.

Compatible Revisions

To use this revision of firmware, update your system tools as follows:

Update this:	To this version or later:
DriveExplorer Lite/Full	4.01
DriveExecutive	3.01
PowerFlex 7-Class Drive	all versions compatible
PowerFlex 4-Class Drive	all versions compatible
Legacy SCANport Drive	all versions compatible
LCD HIM	all versions compatible
RSLinx Classic	2.43

Rockwell Automation Support

Rockwell Automation provides technical information on the web to assist you in using our products. At <http://support.rockwellautomation.com>, you can find technical manuals, a knowledge base of Frequently Asked Questions (FAQs), technical and application notes, sample code and links to software service packs, and a MySupport feature that you can customize to make the best use of these tools.

Rockwell Automation also provides complimentary phone support for drives, communication adapters, and peripherals. If you experience a problem with the 1203-USB converter, please review the information in its User Manual. For further help in getting your converter operational, contact a Customer Support representative:

United States	(1) 262.512.8176 Monday – Friday, 7am – 6pm CST
Outside United States	Please contact your local Rockwell Automation representative for any technical support issues.

For an additional level of technical phone support for installation, configuration and troubleshooting, we offer TechConnect Support programs. For more information, contact your local distributor or Rockwell Automation representative, or visit <http://support.rockwellautomation.com>.

Product Satisfaction Return

Rockwell Automation tests all products to ensure that they are fully operational when shipped from the manufacturing facility. However, if your product is not functioning and needs to be returned:

United States	Contact your distributor. You must provide a Customer Support case number (see phone number above to obtain one) to your distributor to complete the return process.
Outside United States	Please contact your local Rockwell Automation representative for return procedure.

U.S. Allen-Bradley Drives Technical Support - Tel: (1) 262.512.8176, Fax: (1) 262.512.2222, Email: support@drives.ra.rockwell.com, Online: www.ab.com/support/abdrives

www.rockwellautomation.com

Power, Control and Information Solutions Headquarters

Americas: Rockwell Automation, 1201 South Second Street, Milwaukee, WI 53204-2496 USA, Tel: (1) 414.382.2000, Fax: (1) 414.382.4444

Europe/Middle East/Africa: Rockwell Automation, Vorstlaan/Boulevard du Souverain 36, 1170 Brussels, Belgium, Tel: (32) 2 663 0600, Fax: (32) 2 663 0640

Asia Pacific: Rockwell Automation, Level 14, Core F, Cyberport 3, 100 Cyberport Road, Hong Kong, Tel: (852) 2887 4788, Fax: (852) 2508 1846