



20-COMM-P Profibus Adapter Firmware v1.004

This release note describes major revision 1, minor revision 4 of firmware for 20-COMM-P Profibus adapters.

Introduction

The following information is included in this document:

For information about:	See page:
Enhancements	1
Corrected Anomalies	1
Determining Firmware Revision	2
Firmware Flashing	4
Restrictions	7
Compatible Revisions	8
Rockwell Automation Support	8
Product Satisfaction Return	8

Enhancements

There are no enhancements provided in this revision of firmware.

Corrected Anomalies














This section describes the anomaly corrected in this revision of firmware:

- Supports enhanced PKW task processing which allows the Master device to more reliably process network data it receives from the Slave device.

Determining Firmware Revision

This section describes procedures to determine the firmware revision of your 20-COMM-P Profibus adapter.

Using the LCD HIM

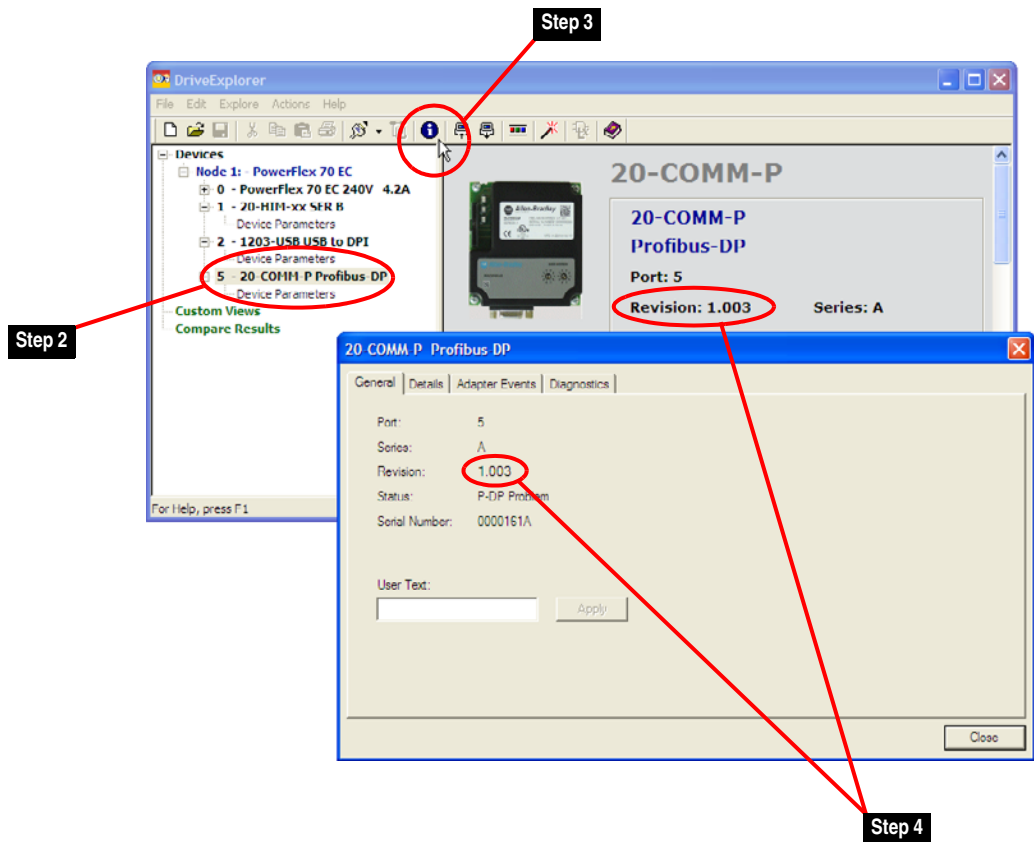
Step	Key(s)	Example Screens												
1. In the main menu, press the Up Arrow or Down Arrow to scroll to Device Select .	 or 	<table border="1"> <tr> <td>F-></td> <td>Stopped</td> <td>Auto</td> </tr> <tr> <td>0.00</td> <td>Hz</td> <td></td> </tr> <tr> <td colspan="3">Main Menu: Diagnostics Parameter Device Select</td> </tr> </table>	F->	Stopped	Auto	0.00	Hz		Main Menu: Diagnostics Parameter Device Select					
F->	Stopped	Auto												
0.00	Hz													
Main Menu: Diagnostics Parameter Device Select														
2. Press Enter to enter your selection.														
3. Press the Up Arrow or Down Arrow to scroll to the 20-COMM-P adapter.	 or 													
4. Press Enter to select the adapter. The main menu for the adapter will appear.														
5. Press the Up Arrow or Down Arrow to scroll to Diagnostics .	 or 	<table border="1"> <tr> <td>F-></td> <td>Stopped</td> <td>Auto</td> </tr> <tr> <td colspan="3">Port 5: 20-COMM-P</td> </tr> <tr> <td colspan="3">Main Menu: Diagnostics Parameter Device Select</td> </tr> </table>	F->	Stopped	Auto	Port 5: 20-COMM-P			Main Menu: Diagnostics Parameter Device Select					
F->	Stopped	Auto												
Port 5: 20-COMM-P														
Main Menu: Diagnostics Parameter Device Select														
6. Press Enter to enter your selection.														
7. Press the Up Arrow or Down Arrow to scroll to Device Version .	 or 													
8. Press Enter to display the Product Data screen.														
9. Press Enter again to display the adapter's firmware version.		<table border="1"> <tr> <td>F-></td> <td>Stopped</td> <td>Auto</td> </tr> <tr> <td colspan="3">Port 5: 20-COMM-P</td> </tr> <tr> <td colspan="3">20-COMM-P Profibus - DP</td> </tr> <tr> <td colspan="3">FW: 1.003 HW: A Date: 12/07/2007</td> </tr> </table>	F->	Stopped	Auto	Port 5: 20-COMM-P			20-COMM-P Profibus - DP			FW: 1.003 HW: A Date: 12/07/2007		
F->	Stopped	Auto												
Port 5: 20-COMM-P														
20-COMM-P Profibus - DP														
FW: 1.003 HW: A Date: 12/07/2007														

Using DriveExplorer Lite/Full

1. Launch DriveExplorer and go online (via 1203-USB or 1203-SSS converter) with the drive that is connected to the adapter.
2. In the DriveExplorer treeview, click on the 20-COMM-P Profibus adapter as shown in [Figure 1](#).
3. Click the information icon to display the adapter's Properties screen.
4. The "Revision:" field shows the present revision (for example, 1.003) of the adapter firmware.

► **TIP:** When clicking on the 20-COMM-P adapter using version 5.01 or higher DriveExplorer Lite/Full, the adapter firmware revision is also shown in the right pane of the DriveExplorer window.

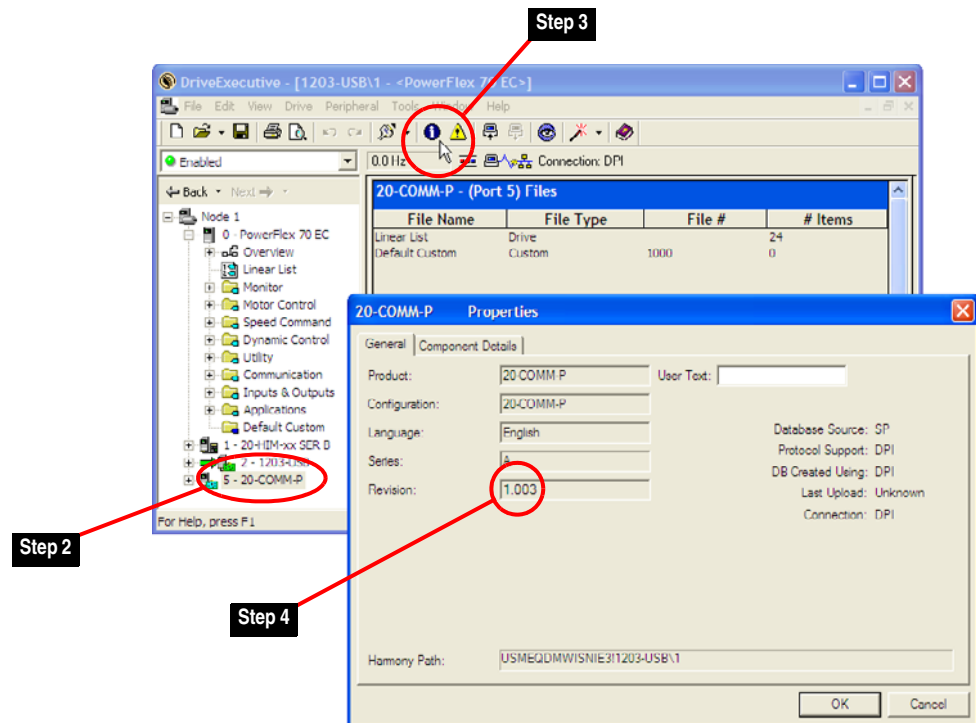
Figure 1 Information Icon in DriveExplorer Window



Using DriveExecutive

1. Launch DriveExecutive and go online with the drive that is connected to the adapter.
2. In the DriveExecutive treeview, click on the 20-COMM-P adapter as shown in [Figure 2](#).
3. Click the information icon to display the adapter's Properties screen.
4. The "Revision:" field shows the present revision (for example, 1.003) of the adapter firmware.

Figure 2 Information Icon in DriveExecutive Window



Firmware Flashing

This section describes procedures to flash upgrade your adapter firmware. Flash kits for drives and communications adapters are provided on the Allen-Bradley Web Updates site located at <http://www.ab.com/support/abdrives/webupdate>. Flashing can only be performed using a 1203-USB or 1203-SSS converter. For information about how to connect to your drive, please refer to the 1203-USB or 1203-SSS User Manual. They can be viewed/downloaded on the Literature Library web site located at www.literature.rockwellautomation.com.



ATTENTION: Risk of permanent equipment damage exists. Once a flash update has been started, do not remove power from the drive until after the download has completed and the adapter MOD status indicator starts FLASHING GREEN. If power is removed before this occurs, the adapter may be permanently damaged. An adapter that has been damaged in this way cannot be repaired.

Installing the Flash Kit

1. Install the flash kit utility from the Allen-Bradley Web Updates site for the 20-COMM-P adapter. (This also automatically installs the latest version of the ControlFLASH utility and deploys the firmware files for use with HyperTerminal on your computer.)
2. You are now ready to use DriveExplorer, DriveExecutive, ControlFLASH or HyperTerminal to update the adapter. Refer to the respective section below and follow the instructions.

Using DriveExplorer Lite/Full

1. With the Flash Kit installed (see [Installing the Flash Kit](#)), launch DriveExplorer and go online (via a 1203-USB or 1203-SSS converter) with the drive that is connected to the adapter.
2. In the DriveExplorer treeview, click on the 20-COMM-P adapter. Then click the information icon as shown in [Figure 1](#) to display the adapter's Properties screen.
3. On the 20-COMM-P Properties screen, click the Details tab.

Important: This update may cause the adapter parameters to revert to their default values. You may want to save your configuration using DriveExplorer or the HIM CopyCat feature before upgrading.

4. To start the flash update, click the **Flash Update...** button. Then select v1.004.xx from the list of available updates and click **Next >**. Follow the remaining screen prompts until the flash update procedure completes and displays the new firmware revision (v1.004).

Using DriveExecutive

1. With the Flash Kit installed (see [Installing the Flash Kit](#)), launch DriveExecutive and go online with the drive that is connected to the adapter.
2. In the DriveExecutive treeview, click on the 20-COMM-P adapter. Then click the information icon as shown in [Figure 2](#) to display the adapter's Properties screen.
3. On the 20-COMM-P Properties screen, click the Component Details tab.

Important: This update may cause the adapter parameters to revert to their default values. You may want to save your configuration using DriveExecutive or the HIM CopyCat feature before upgrading.

4. To start the flash update, click the **Flash Update** button. Then select v1.004.xx from the list of available updates and click **Next >**. Follow the remaining screen prompts until the flash update procedure completes and displays the new firmware revision (v1.004).

Using ControlFLASH

1. With the Flash Kit installed (see [Installing the Flash Kit on page 5](#)), launch ControlFLASH by selecting **Start > (All) Programs > Flash Programming Tools > ControlFLASH**.

2. On the ControlFLASH Welcome screen, click **Next >**.

3. Choose the 20-COMM-P from the list and click **Next >**.

Important: This update may cause the adapter parameters to revert to their default values. You may want to save your configuration using the HIM CopyCat feature, DriveExplorer or DriveExecutive before upgrading.

4. Expand the treeview for the communication path you are using, and select the drive icon that represents the drive with the 20-COMM-P adapter you are updating. Then click **OK**.
5. With the Multiple Assemblies Found window displayed, select “Port X - 20-COMM-P” from the list and click **OK**.
6. With the Firmware Revision window displayed, select “1.004.xx” from the list of available updates and click **Next >**. Follow the remaining screen prompts until the flash procedure completes and displays the new firmware revision (v1.004).

Using HyperTerminal

1. With the Flash Kit installed (see [Installing the Flash Kit on page 5](#)), launch HyperTerminal and go online (via 1203-USB or 1203-SSS converter) with the powered drive that is connected to the adapter.
2. Press the **Enter** key until the main menu ([Figure 3](#)) appears.

Figure 3 Main Menu

```
Main Menu - Enter Number for Selection
1> Display Setup Parameters
2> Display Event Queue
3> Flash Upgrade
```

3. In the main menu, press **3** to flash upgrade. Then press the number key that corresponds to the “20-COMM-P” in the list, and press **Y** (for Yes) to update the flash code. The terminal program will start displaying the letter “C”. This signals the XMODEM protocol that the download may proceed. You then have one minute to start the transfer. Press **CTRL-X** to cancel a started update.

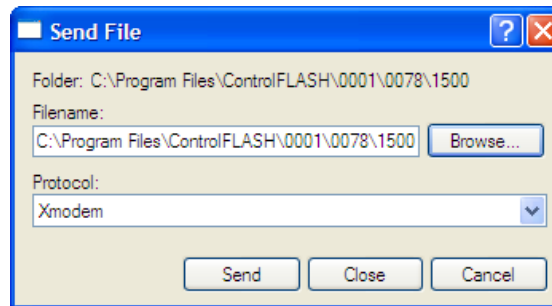


ATTENTION: Risk of injury or equipment damage exists. When you perform a flash update, the drive will fault if it is receiving control I/O from the adapter. Verify that the drive has stopped safely or is receiving control I/O from an alternate source before beginning a flash update.

4. Select **Transfer > Send File** to display the Send File screen ([Figure 4](#)).
5. Click **Browse** and navigate to the flash file located in:

C:\Program Files\ControlFLASH\0001\0078\1500

Figure 4 Send File Screen



6. In the Select File to Send window list, double-click on the “BOOT_20_COMM_P_V_1_004_01_.bin” file. This file name now appears in the Filename box in the Send File screen.
7. In the Protocol box, select “Xmodem.”
8. Click **Send**. A dialog box appears and reports the progress of the update. When it is complete, the message “Flash Complete” appears. HyperTerminal also checks the new firmware in the module and resets the module.

Important: Keep the device powered for 15 seconds after the operation has completed or until the adapter MOD status indicator starts flashing green.

9. Repeat steps 2 through 8 for the “COMBO_20_COMM_P_V_1_004_01.bin” file.
10. Press the **Enter** key to return to the main menu.

Restrictions

No restrictions apply to this revision of firmware.

Compatible Revisions

To use this revision of firmware, update your system tools as follows:

Update this:	To this version or later:
DriveExplorer Lite/Full	4.01
DriveExecutive	3.01
PowerFlex 7-Class Drive	all versions compatible
LCD HIM	all versions compatible
RSLinx Classic	2.43

Rockwell Automation Support

Rockwell Automation provides technical information on the web to assist you in using our products. At <http://support.rockwellautomation.com>, you can find technical manuals, a knowledge base of Frequently Asked Questions (FAQs), technical and application notes, sample code and links to software service packs, and a MySupport feature that you can customize to make the best use of these tools.

Rockwell Automation also provides complimentary phone support for drives, communication adapters, and peripherals. If you experience a problem with the adapter, please review the information in its User Manual. For further help in getting your adapter operational, contact a Customer Support representative:

United States	(1) 262.512.8176 Monday – Friday, 7am – 6pm CST
Outside United States	Please contact your local Rockwell Automation representative for any technical support issues.

For an additional level of technical phone support for installation, configuration and troubleshooting, we offer TechConnect Support programs. For more information, contact your local distributor or Rockwell Automation representative, or visit <http://support.rockwellautomation.com>.

Product Satisfaction Return

Rockwell Automation tests all products to ensure that they are fully operational when shipped from the manufacturing facility. However, if your product is not functioning and needs to be returned:

United States	Contact your distributor. You must provide a Customer Support case number (see phone number above to obtain one) to your distributor to complete the return process.
Outside United States	Please contact your local Rockwell Automation representative for return procedure.

U.S. Allen-Bradley Drives Technical Support - Tel: (1) 262.512.8176, Fax: (1) 262.512.2222, Email: support@drives.ra.rockwell.com, Online: www.ab.com/support/abdrives

www.rockwellautomation.com

Power, Control and Information Solutions Headquarters

Americas: Rockwell Automation, 1201 South Second Street, Milwaukee, WI 53204-2496 USA, Tel: (1) 414.382.2000, Fax: (1) 414.382.4444

Europe/Middle East/Africa: Rockwell Automation, Vorstlaan/Boulevard du Souverain 36, 1170 Brussels, Belgium, Tel: (32) 2 663 0600, Fax: (32) 2 663 0640

Asia Pacific: Rockwell Automation, Level 14, Core F, Cyberport 3, 100 Cyberport Road, Hong Kong, Tel: (852) 2887 4788, Fax: (852) 2508 1846