



20-WIM-Nx DPI Wireless Interface Module Firmware v1.003

This release note describes major revision 1, minor revision 3 of firmware for 20-WIM-Nx wireless interface module.

Introduction

The following information is included in this document:

For information about:	See page:
Enhancements	1
Corrected Anomalies	1
Determining Firmware Revision	2
Firmware Flashing	4
Restrictions	6
Compatible Revisions	6
Rockwell Automation Support	7
Product Satisfaction Return	7

Enhancements

There are no enhancements provided in this revision of firmware:

Corrected Anomalies

This section describes the anomaly corrected in this revision of firmware:

- Prevents data corruption in the SCANport Block Transfer emulation routine that caused communication errors with DriveTools SP software tools (DriveExecutive and DriveObserver).
- Now automatically detects if the CRC or BCC checksum is being used in SCANport mode.

Determining Firmware Revision

This section describes procedures to determine the firmware revision of your 20-WIM-Nx wireless interface module.

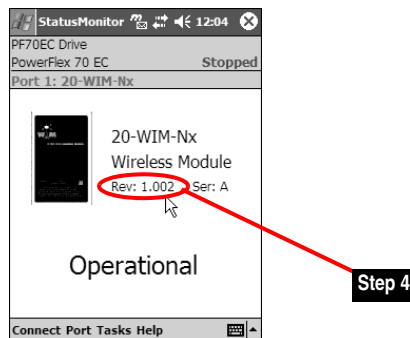
Using the LCD HIM (20-HIM-**)

Step	Key(s)	Example Screens
1. In the main menu, press the Up Arrow or Down Arrow to scroll to Device Select .	▲ OR ▼	<pre> F-> Stopped Auto ----- ----- ----- 0.00 Hz Main Menu: Parameter Device Select Memory Storage </pre>
2. Press Enter to enter your selection.	↵	
3. Press the Up Arrow or Down Arrow to scroll to the 20-WIM-Nx module.	▲ OR ▼	
4. Press Enter to select the WIM module. The main menu for the module will appear.	↵	
5. Press the Up Arrow or Down Arrow to scroll to Diagnostics .	▲ OR ▼	<pre> Port 2 Device 20-WIM-Nx Main Menu: Diagnostics Parameter Device Select </pre>
6. Press Enter to enter your selection.	↵	
7. Press the Up Arrow or Down Arrow to scroll to Device Version .	▲ OR ▼	
8. Press Enter to display the Product Data screen.	↵	
9. Press Enter again to display the module's firmware version.	↵	<pre> Port 2 Device 20-WIM-Nx Diag: Prodct Ver FW Ver: 1.002 Series: A Date: 02/03/2006 </pre>

Using Pocket DriveExplorer for Pocket PC

1. Launch Pocket DriveExplorer for Pocket PC.
2. Establish wireless communication between the WIM and Pocket PC.
3. The StatusMonitor screen will appear. Click **Port > Port x** (where x is the drive port to which the WIM is connected).
4. The “Rev:” field shows the present revision (for example, 1.002) of the WIM firmware ([Figure 1](#)).

Figure 1 Information Icon in Pocket DriveExplorer for Pocket PC Window



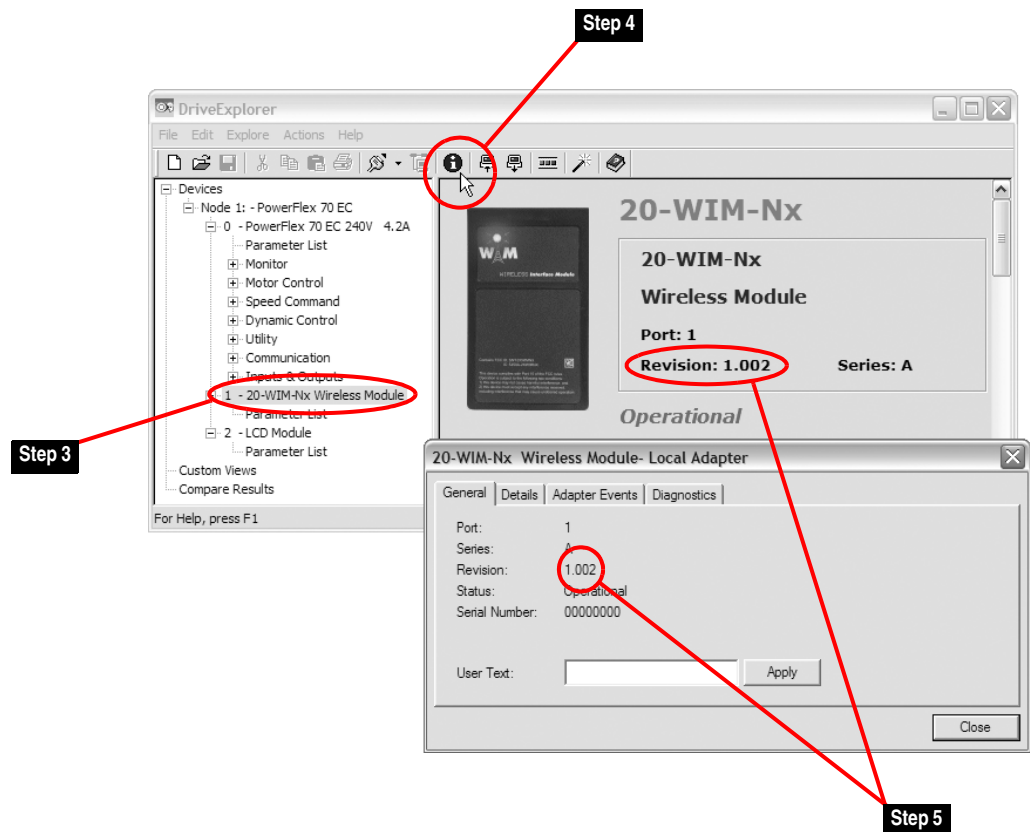
Using DriveExplorer Lite/Full

1. Launch DriveExplorer and establish wireless communication with the drive that is connected to the WIM.
2. In the DriveExplorer treeview, click on 20-WIM-Nx Wireless Module as shown in [Figure 2](#).
3. Click the information icon to display the WIM properties screen.
4. The “Revision:” field shows the present revision (for example, 1.002) of the WIM firmware.



TIP: When clicking on the 20-WIM-Nx module using version 5.01 or higher DriveExplorer Lite/Full, the WIM firmware revision is also shown in the right pane of the DriveExplorer window.

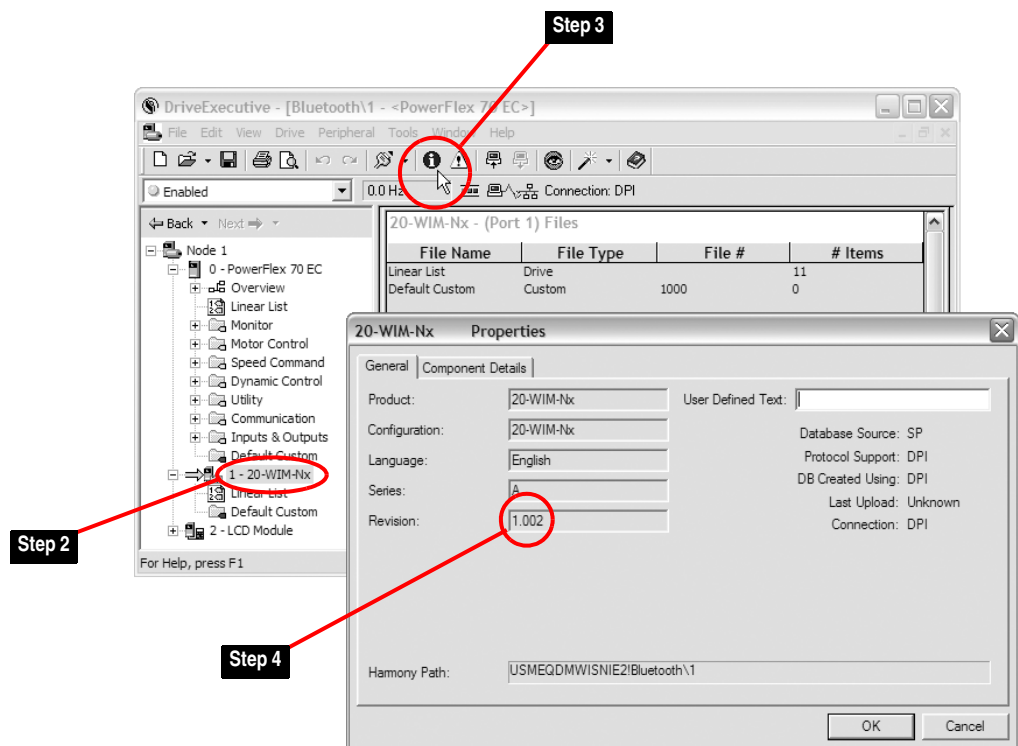
Figure 2 Information Icon in DriveExplorer Window



Using DriveExecutive

1. Launch DriveExecutive and establish wireless communication with the drive that is connected to the WIM.
2. In the DriveExecutive treeview, click on 20-WIM-Nx as shown in [Figure 3](#).
3. Click the information icon to display the WIM Properties screen.
4. The “Revision:” field shows the present revision (for example, 1.002) of the WIM firmware.

Figure 3 Information Icon in DriveExecutive Window



Firmware Flashing

This section describes procedures to flash upgrade your WIM firmware. Flash kits for drives, communications adapters, and peripherals are provided on the Allen-Bradley Web Updates site located at <http://www.ab.com/support/abdrives/webupdate>.



ATTENTION: Risk of permanent equipment damage exists. Once a flash update has been started, do not remove power from the drive until after the download has completed and the status indicator on the WIM becomes FLASHING GREEN. If power is removed before this occurs, the WIM may be permanently damaged. A WIM that has been damaged in this way cannot be repaired.

Installing the Flash Kit

1. Install the flash kit utility from the Allen-Bradley Web Updates site for the 20-WIM-Nx module. (This also automatically installs the latest version of the ControlFLASH utility on your computer.)



TIP: If you intend to flash update using Pocket DriveExplorer for Pocket PC, use the Flash File Transfer Utility (also on the Allen-Bradley Web Updates site) to transfer the flash kit from your desktop or laptop computer to your Pocket PC which must be actively synchronized with it.

2. You are now ready to use Pocket DriveExplorer for Pocket PC, DriveExplorer, or DriveExecutive to update the WIM. Follow the instructions in the appropriate section below.

Using Pocket DriveExplorer for Pocket PC

1. With the Flash Kit installed (see [Installing the Flash Kit](#)), launch Pocket DriveExplorer for Pocket PC and establish wireless communication with the drive that is connected to the WIM.
2. With the StatusMonitor screen displayed, select **Tasks > Flash Update**.

Important: This update may cause the WIM parameters to revert to their default values. You may want to save your configuration using Pocket DriveExplorer for Pocket PC before upgrading.

3. With the DeviceFlash screen displayed, select version 1.003 firmware under the “Available Updates” window, and click **Next** ([Figure 1](#)). The DeviceFlash Update Warning screen will appear.
4. To start the flash update, click **Flash**. Follow the screen prompts until the flash update procedure completes and displays the new firmware revision (v1.003).

Using DriveExplorer Lite/Full

1. With the Flash Kit installed (see [Installing the Flash Kit](#)), launch DriveExplorer and establish wireless communication with the drive that is connected to the WIM.
2. In the DriveExplorer treeview, click on 20-WIM-Nx Wireless Module. Then click the information icon as shown in [Figure 2](#) to display the WIM properties screen.
3. On the 20-WIM-Nx properties screen, click the Details tab.

Important: This update may cause the WIM parameters to revert to their default values. You may want to save your configuration using DriveExplorer before upgrading.

4. To start the flash update, click the **Flash Update...** button. Follow the screen prompts until the flash update procedure completes and displays the new firmware revision (v1.003).

Using DriveExecutive

1. With the Flash Kit installed (see [Installing the Flash Kit on page 5](#)), launch DriveExecutive and establish wireless communication with the drive that is connected to the WIM.
2. In the DriveExecutive treeview, click on 20-WIM-Nx. Then click the information icon as shown in [Figure 3](#) to display the WIM Properties screen.
3. On the 20-WIM-Nx Properties screen, click the Component Details tab.

Important: This update may cause the WIM parameters to revert to their default values. You may want to save your configuration using DriveExecutive before upgrading.

4. To start the flash update, click the **Flash Update** button. Follow the screen prompts until the flash update procedure completes and displays the new firmware revision (v1.003).

Using ControlFLASH

1. With the Flash Kit installed (see [Installing the Flash Kit on page 5](#)), launch ControlFLASH by selecting **Start > (All) Programs > Flash Programming Tools > ControlFLASH**.
2. Choose the 20-WIM-Nx v1.003 update from the list of available updates.

Important: This update may cause the WIM parameters to revert to their default values. You may want to save your configuration using Pocket DriveExplorer for Pocket PC, DriveExplorer or DriveExecutive before upgrading.

3. Follow the screen prompts until the flash procedure completes and displays the new firmware revision (v1.003).

Restrictions

No restrictions apply to this revision of firmware.

Compatible Revisions

To use this revision of firmware, update your system tools as follows:

Update this:	To this version or later:
DriveExplorer Lite/Full	4.01
DriveExecutive	3.01
PowerFlex 7-Class Drive	all versions compatible
LCD HIM	all versions compatible
RSLinx Classic	2.43

Rockwell Automation Support

Rockwell Automation provides technical information on the web to assist you in using our products. At <http://support.rockwellautomation.com>, you can find technical manuals, a knowledge base of Frequently Asked Questions (FAQs), technical and application notes, sample code and links to software service packs, and a MySupport feature that you can customize to make the best use of these tools.

Rockwell Automation also provides complimentary phone support for drives, communication adapters, and peripherals. If you experience a problem with the WIM, please review the information in its User Manual. For further help in getting your WIM operational, contact a Customer Support representative:

United States	(1) 262.512.8176 Monday – Friday, 7am – 6pm CST
Outside United States	Please contact your local Rockwell Automation representative for any technical support issues.

For an additional level of technical phone support for installation, configuration and troubleshooting, we offer TechConnect Support programs. For more information, contact your local distributor or Rockwell Automation representative, or visit <http://support.rockwellautomation.com>.

Product Satisfaction Return

Rockwell Automation tests all products to ensure that they are fully operational when shipped from the manufacturing facility. However, if your product is not functioning and needs to be returned:

United States	Contact your distributor. You must provide a Customer Support case number (see phone number above to obtain one) to your distributor to complete the return process.
Outside United States	Please contact your local Rockwell Automation representative for return procedure.

U.S. Allen-Bradley Drives Technical Support - Tel: (1) 262.512.8176, Fax: (1) 262.512.2222, Email: support@drives.ra.rockwell.com, Online: www.ab.com/support/abdrives

www.rockwellautomation.com

Power, Control and Information Solutions Headquarters

Americas: Rockwell Automation, 1201 South Second Street, Milwaukee, WI 53204-2496 USA, Tel: (1) 414.382.2000, Fax: (1) 414.382.4444

Europe/Middle East/Africa: Rockwell Automation, Vorstlaan/Boulevard du Souverain 36, 1170 Brussels, Belgium, Tel: (32) 2 663 0600, Fax: (32) 2 663 0640

Asia Pacific: Rockwell Automation, Level 14, Core F, Cyberport 3, 100 Cyberport Road, Hong Kong, Tel: (852) 2887 4788, Fax: (852) 2508 1846